

DOMINGO

STRUMENTI IN MIb

merengue

Musica di
P. Bini - V. Serra

intro

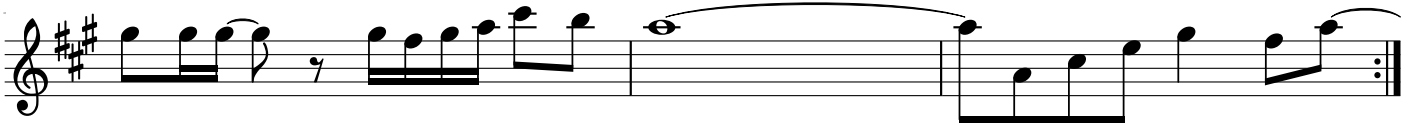
The introduction consists of three staves of music in treble clef, key of D major (two sharps), and 4/4 time. The first staff begins with a whole rest followed by a series of eighth and sixteenth notes. The second and third staves continue the melodic line with similar rhythmic patterns, including slurs and accents.

sax

The saxophone part consists of seven staves of music in treble clef, key of D major, and 4/4 time. It begins with a whole rest followed by a melodic line. The notation includes slurs, accents, and repeat signs. The piece concludes with a double bar line.

1. 2.

The first and second endings are shown on a single staff in treble clef, key of D major, and 4/4 time. The first ending (marked '1.') leads to a repeat sign, and the second ending (marked '2.') concludes the piece with a double bar line.



finale

