

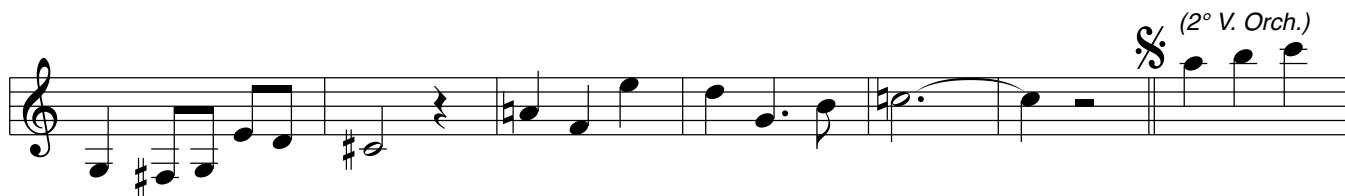
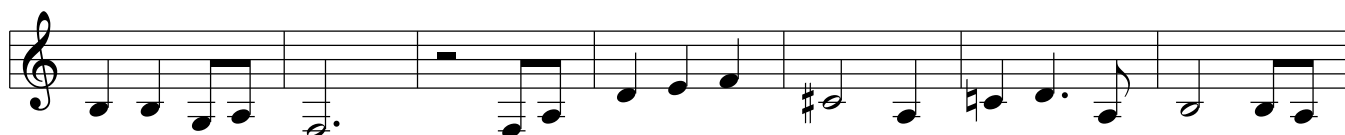
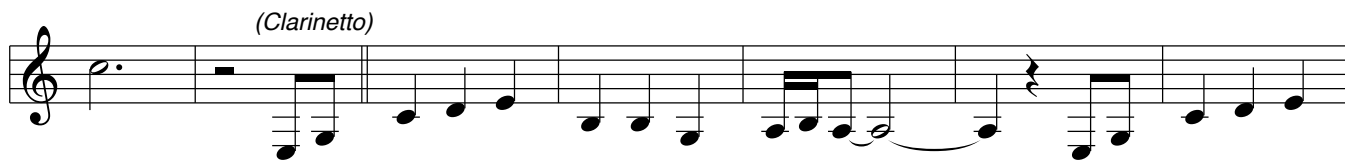
Programmare:

Serra
NEVE SU ROMA

NEVE SU ROMA

VALZER LENTO
STRUMENTI IN SibMusica di
V. Serra e V. Correnti

T° di Valzer lento



Musical score for the first system, consisting of five staves. The first staff contains three triplet markings. The second staff features an eighth-note run marked with an '8'. The third and fourth staves continue the melodic and harmonic development. The fifth staff concludes with a triplet and a fermata.

*Dal S al C
poi segue*

Segue (Clarinetto)

Musical score for the second system, consisting of five staves for the Clarinet part. The first staff begins with a fermata and the word 'Segue'. The second staff contains a 'Rall.' marking. The third and fourth staves show melodic lines with various ornaments and dynamics. The fifth staff concludes with a 'tempo' marking.